

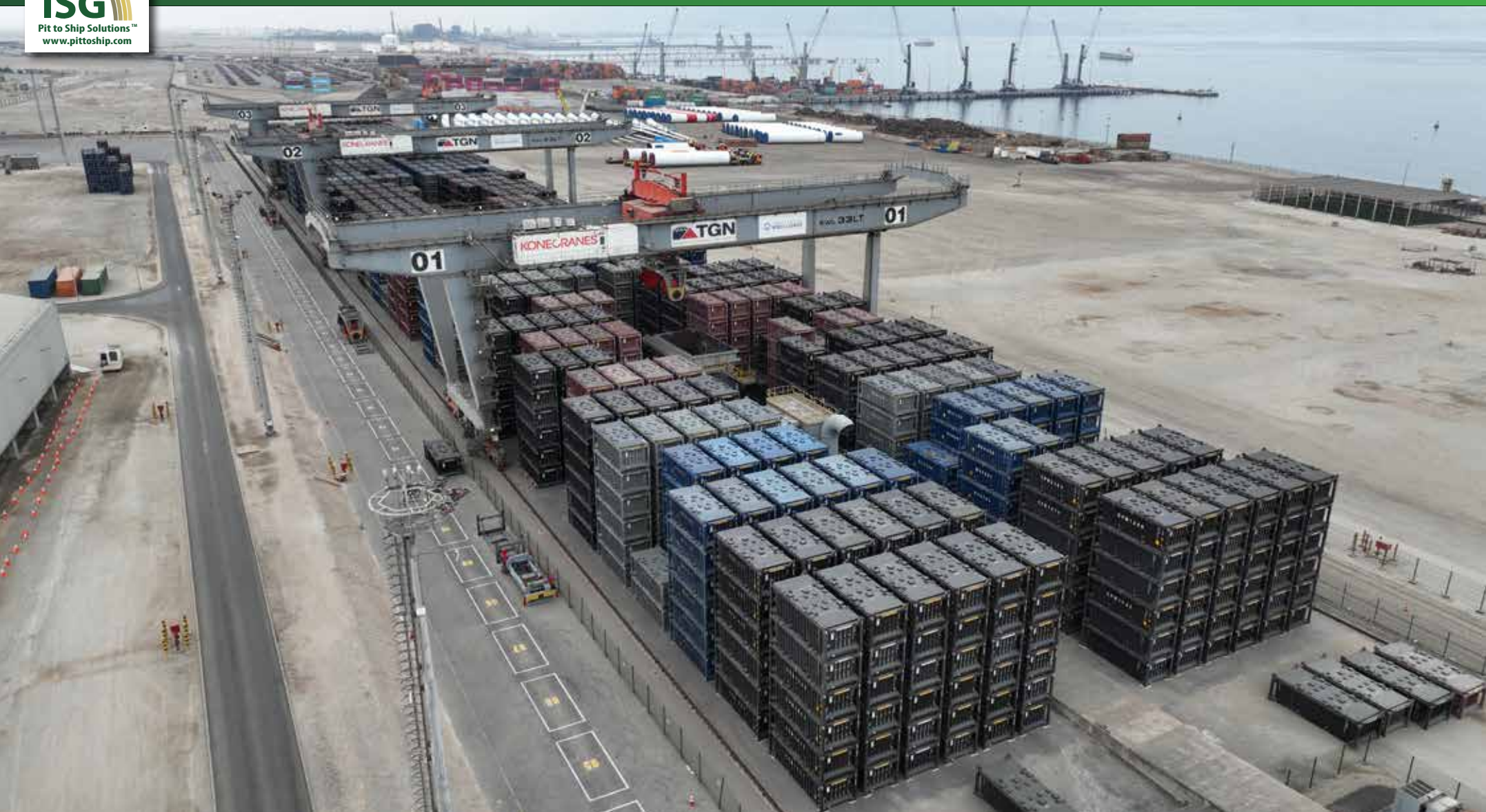


ISG - Logistic, Storage and Ship Loading Solution

2026 Edition

Environment, Productivity & Safety

CAPEX or OPEX



See Page 4 for more
Information on this Process

Logistic, Storage and Ship Loading Solution using Sealed
Containers for the Mining, fertilizer and grain industries.

2. Table of Contents
3. Company Background
4. Container Blending Flow Chart
5. Automated Bulk Terminal using ISG Rotating Containers
6. Converting Big Bags to Containerised Bulk Handling
7. Ships Crane Operation
8. Introducing our Rotating Container Fleet
9. Rotating Container Fleet for Copper Concentrates in America
10. Rotating Container Fleet for Copper Concentrate A-TYPE
11. Rotating Container Fleet for Copper Concentrate B-TYPE
12. Rotating Container Fleet for Copper Concentrate with Heavy Duty
13. 4m Rotating Container Fleet for Copper Concentrate
14. Freight Car Americas - ABC Rail Wagons for Copper Concentrate
15. Introducing the ISG Combo™ Truck Trailers and Bulk Containers
16. Rotating Container Fleet for Mineral Sands Container
17. Rotating Container Fleet for Nickel Concentrate
18. 20' BK2 Half Height for the European market
19. Pit to Shed Solution
20. Fertilizer Grade Containers
21. BFI Fertilizer Containers
22. Rotating Container Fleet for Grain
23. Simple Solution for Digitized and Traceable Supply Chain
24. Introducing the FLEXITOP
25. FLEXITOP – Multipurpose – Pallet Wide
26. FLEXITOP – Bulk Grain
27. FLEXITOP – Bulk Coal
28. FLEXITOP - Ore Container
29. 20' Bulk Open Top Containers for End Tipping
30. 20' Bulk Open Top Containers for End Tipping
31. Standard Bulk Containers
32. Bulk - Smooth Wall and Paper Friendly
33. Coke and Anode Bulk Containers
34. 20' Scrap Steel and Waste Containers
35. Safe and Secure Waste Container Solutions
36. Safe and Secure Waste Container Solutions
37. Safe and Secure Waste Container Solutions
38. Scrap Metal Container
39. DCN Environmental and Safety Award
40. ALABC Business Excellence Award
41. ALABC Business Excellence Award
42. Winners of the 2015 NSW Environment Export Awards
43. Sponsorship - Don Orione in Antofagasta, Chile
44. Sponsorship - Zarik School, Tanzania, Africa
45. Ports, Mining & Fertilizer Companies using our Rotating Container Fleet
46. CBH Clients in the Americas
47. CBH Mining Clients in the Americas
48. Terminal Operator Clients in the Americas
49. Terminal Operator Clients in the Americas

Pit to Ship Solutions™ Brochure
Copyright 2024
Printed December 2025



ISG - Pit to Ship Solutions™



Company Background

Intermodal Solutions Group (ISG) is the largest supplier of tippler friendly containers in the mining, fertilizer and grain sector **globally**. ISG has been building containers for over twenty years now and our team has over thirty years- experience in the container industry.

ISG has so many container designs we have broken our product brochures into two different publications, one for tippler friendly containers the other for waste and pallet wide general freight containers.

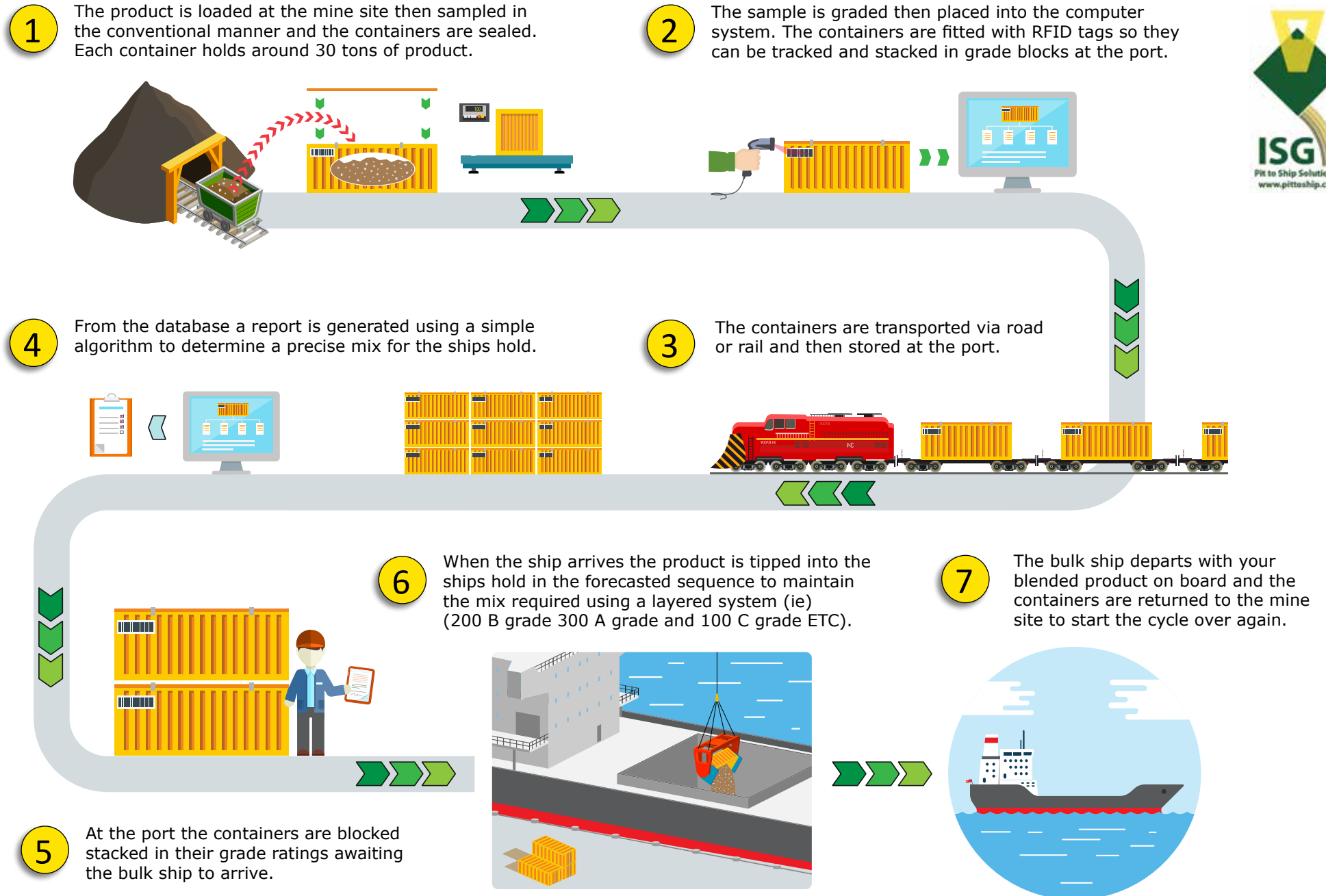
This has also been the case for our websites with www.pittoship.com being for tippler friendly containers and www.roadrailcontainers.com for our waste and pallet wide containers.

ISG first introduced the pit to ship solution in Australia in 2010 then in Chile in 2014 through the port of Angamos in Antofagasta and this year marks the 10th anniversary of that event . over 90% of the Chilean ports and 90% of the miners exporting from Chile are now benchmarking what Angamos did and are using our patented solution. The above photo is of the ISG team that implemented the solution in Chile.

The following tippler friendly brochure has many container designs being used around the world, along with rail wagons and container trailer designs, and our **Block Chain System** (page 24) to help you decide what is best for your project.

The ISG engineering team can assist you with your project and we are just a phone call away.

CONTAINER BLENDING FLOW CHART



ISG - Pit to Ship Solutions™



Automated Bulk Terminal using **ISG Rotating Containers**

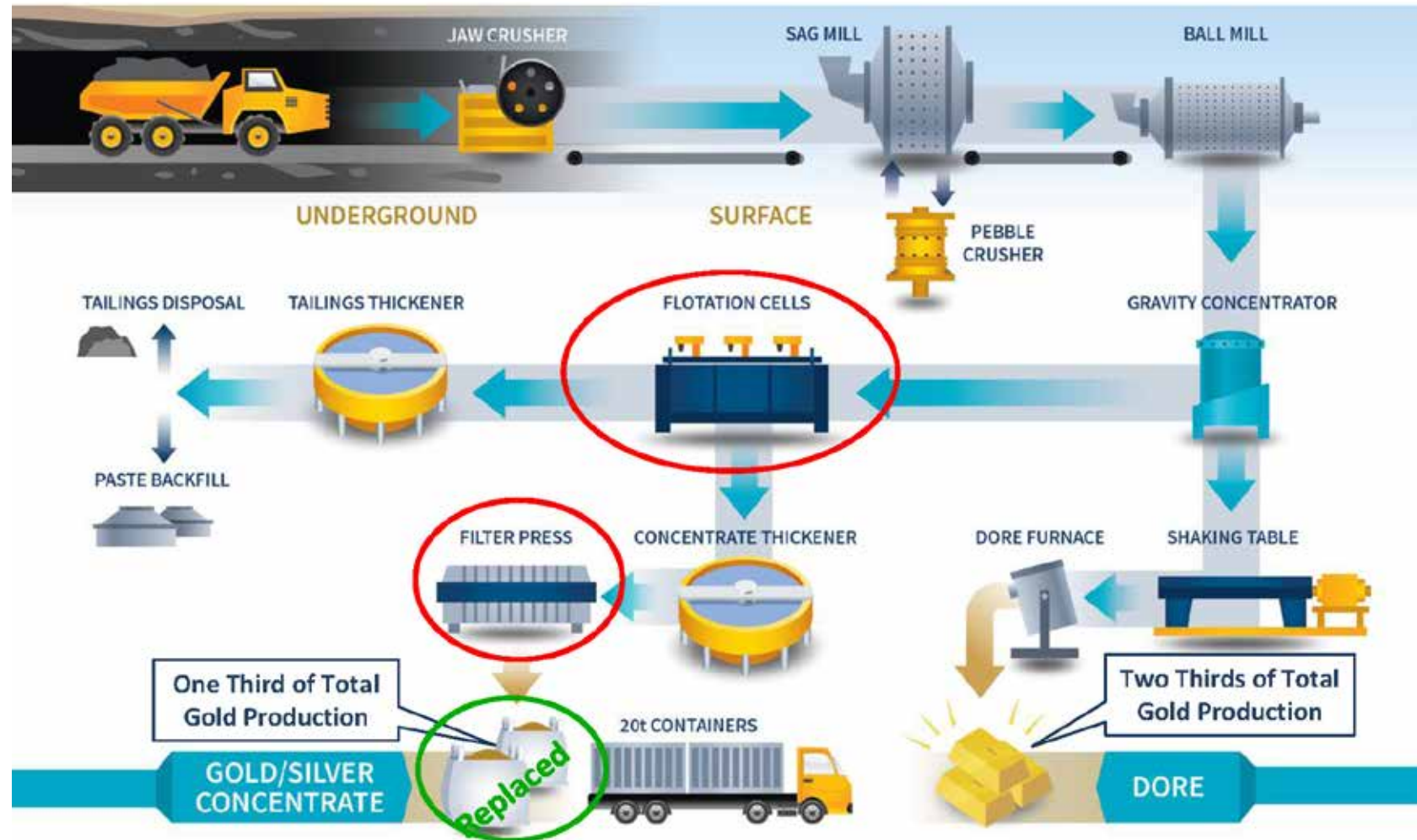
The world's first fully automated bulk terminal in Antofagasta Chile using the ISG Rotating Containers.

Chile's top five copper exporters are going through this port all using ISG containers.

TGN stockyard with Rail Mounted Gantry Cranes, ISG rotating containers, Revolving Spreaders and large above-ground dust aspirated hoppers in central isle feeding the tunnel outtake conveyor towards the ship loader.

CONVERTING BIG BAGS TO CONTAINERISED BULK HANDLING

This company has found the need to move from **Big Bags** to our **Containers** in Canada...



Big bags are a startup solution that is expensive and not environmentally friendly. Bags cost from USD\$7 -25 with RFID tags for two ton of product. In most locations in China, the bags are sliced open at the end customers processing plant, and after the product is released they are place into land fill or even burnt in some locations leaving behind an environmental nightmare with product residual also left in the bags. **Containers have a twenty year life, containers carry 30 ton of product leaving behind no residual product when emptied, fifteen bags equals one container per trip.**

ISG - Pit to Ship Solutions™



Ships Crane Operation

Designed for locations where there is no current crane infrastructure . The ISG - Pit To Ship Solutions containers are designed for all crane types so if you have a project where no cranes are available ISG can provide a ships crane tippler and our patented containers.

Case study

The first ship was loaded in Wollongong with copper concentrate using ships cranes and ISG Pit To Ship solutions containers.

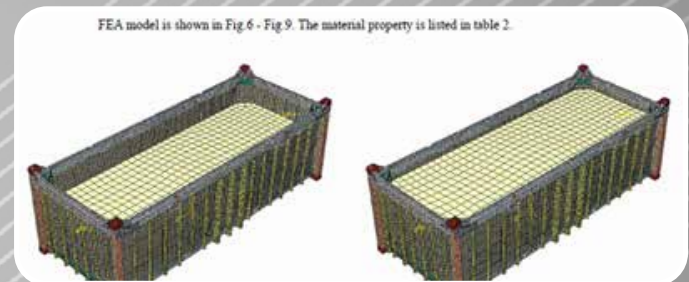
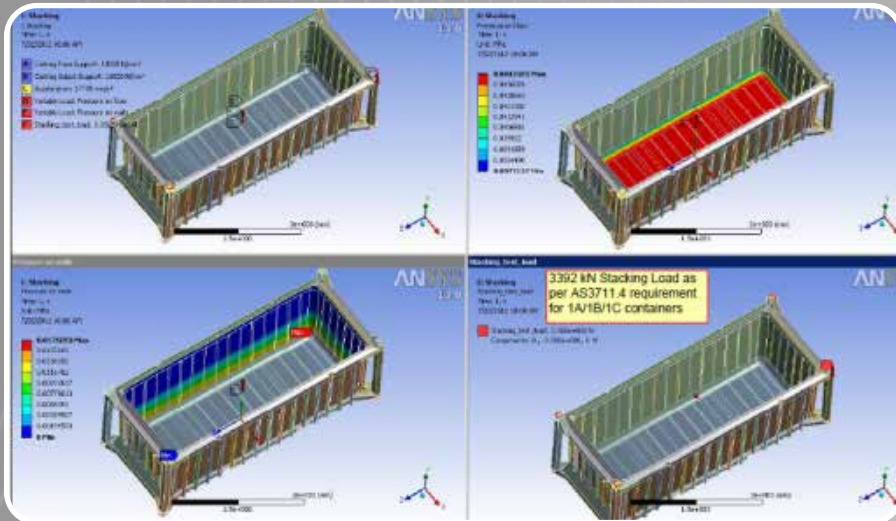
At the mine site the ISG containers have their lids removed by the ISG mine site lid lifter. The ISG containers are then loaded with copper at the mine site using a front end loader , the lids are then replaced by the ISG lid lifter.

Each container is placed onto trucks and taken to the railhead where they are loaded onto the train. The copper is then delivered by rail from North Parkes mine. The train arrives into the Patrick terminal in Wollongong where the loaded containers are swapped for the unloaded containers, the train then returns to Parkes.

The loaded containers are taken around to the quay side and using the ships crane and a tippler the containers are placed into the ship's hull. Using the patented ISG lid lifter the containers are rotated 360 degrees and the copper is placed into the ship's hull making this a dust free solution .

The following photos show the loading process using ships crane , tippler and the ISG containers, note the ISG patented lid lifter in operation. This process can be seen on video on our website www.pittoship.com under the ships crane icon.

ISG - Pit to Ship Solutions™



Introducing our Rotating Container Fleet

Introducing the CONTAINERTIPP™ range of bulk containers for usage with tippers. CONTAINERTIPP™ is a trade mark name for bulk containers that can be used with tippers around the world.

Pit to Ship Solutions containers have had a full structural engineering analysis. We have had our designs fully analysed by independent structural engineering company HAALD. HAALD have done full FEA and have approved the containers for use with revolving spreaders by an independent third party.

Pit to Ship Solutions will provide the full reports to the customer if we are the successful supplier.

Further to the standard container testing and increased loading of 1x payload on the side wall, Pit to Ship Solutions has performed a series of tests which simulate the life cycle of the container. We perform the following additional tests.

- Load the container with 1.2 x Payload on the side walls and lift from only two top corner fittings.
- Load the container with 1 x payload on the side walls and lift from only two top corner castings up to 250 times.
This test simulates 10 years of service with 5 cycles per year.

All tests are witnessed by Lloyd's Register, with witness report issued.

ISG - Pit to Ship Solutions™



Rotating Container Fleet for Copper Concentrates in America AAR Approved

ISG Concentrate containers have been reviewed and approved by Association of American Railroads (AAR) for use on US rail networks. ISG supplied the first copper concentrate containers for Arizona in the United States. The containers were specifically designed to suit the road limit restrictions for the state of Arizona. The container gross weight also maximises payload on the USA rail network, especially when double stacked on the innovative ABC Rail car. The patented ISG container lids allows the unit to be secured for travel from Arizona to the port of Guyamas in Mexico without any product loss from theft or from dust being released into the atmosphere. The lid is placed on at the mine site, using the ISG mine site lid lifter, then secured using customs seals, the lid then remains locked on the container until taken off at the port.

The design team in ISG also added an inspection hatch to the lid to allow US customs a way of inspecting the container interior on the way through the US and Mexican border and on the return leg.

Our reputation is backed by our customers. References available from all the customers in pages 46, 47, 48 and 49 of this brochure.

Specifications

External Dimensions (mm)			Internal Dimensions (mm)			Weight (kg)		Capacity	
Length	Width	Height	Length	Width	Height	Max. Gross	Tare	Max. Payload	(M ³)
6058	2438	1800	5418	2114	1449	27220	2730	24490	16.6

ISG - Pit to Ship Solutions™



Rotating Container Fleet for Copper Concentrate A-TYPE

Pit to Ship Solutions is the Australian market leader in Open Top half heights for Copper Concentrate. This container has been designed, manufactured and tested in conjunction with some of Australia's leading mining companies. The container is designed for minimum product hang-up which includes curved gussets in all corners, and tapered side and end walls. The container is designed to be suitable with all tippers in the Australian market, and includes a pioneering lid, which is automatically locked and unlocked by the tippers. The container is also the first open top half height in the Australian market to be certified to BK2 requirements and ADG7. The container also includes our special anti abrasion coating. Intermodal Solutions Group (ISG) manufactured 1,400 units for OZ Minerals. These units can be seen in operation at Flinders Ports in Adelaide. ISG is proud to announce 20,000 of this container design has now been placed into the global marketplace. Ask our sales team for references of customers using our designs.

Our reputation is backed by our customers. References available from all the customers in pages 46, 47, 48 and 49 of this brochure.

Specifications

External Dimensions (mm)			Internal Dimensions (mm)			Weight (kg)		Capacity	
Length	Width	Height	Length	Width	Height	Max. Gross	Tare	Max. Payload	(M ³)
6058	2438	2000	N/A	N/A	N/A	33360	3260	30100	18.8

ISG - Pit to Ship Solutions™



Rotating Container Fleet for Copper Concentrate B-TYPE

Our B-Type container has been designed for various concentrates including copper, zinc and lithium. Other products such as iron ore can be used with this type of container and ISG has supplied over 14,000 of these into the global marketplace with a life expectancy of around 20 years.

These containers can also be fitted with rear hatches for rear tipping or rotating tipping .

Specifications

External Dimensions (mm)			Internal Dimensions (mm)			Weight (kg)		Capacity	
Length	Width	Height	Length	Width	Height	Max. Gross	Tare	Max. Payload	(M ³)
6058	2438	1850	5872	2126	1566	31600	3050	28550	19

ISG - Pit to Ship Solutions™



Rotating Container Fleet for Copper Concentrate with **Heavy Duty**

ISG responded to a tender with HPH for the supply of tippler friendly containers for the Mexican market. ISG was successful and supplied the containers in early 2017. The containers feature a heavy pay load and are built for tippler use in the TIMSA Terminal Manzanillo.

Our reputation is backed by our customers. References available from all the customers in pages 46, 47, 48 and 49 of this brochure.

Specifications

External Dimensions (mm)			Internal Dimensions (mm)			Weight (kg)			Capacity
Length	Width	Height	Length	Width	Height	Max. Gross	Tare	Max. Payload	(M³)
6058	2438	2000	N/A	N/A	N/A	40000	3560	36440	22

ISG - Pit to Ship Solutions™



4m Rotating Container Fleet for Copper Concentrate, *Thinking Outside the Square!*

ISG supplied 1,100 x 4m copper concentrate containers to MMG and Peru rail for the movement of copper in Peru. MMG had a road and rail payload weight problem, if they used 2x20'containers their payload would be over the legal limit in Peru. If they used one 20'container they would fall short of the legal limit and move less copper.

The solution was The 4m container. This provided MMG with an advantage of loading two 4m containers with a pay load of 17,250 KG per container on a road truck and rail wagon providing a better payload then one 20'container. So next time your company has a weight problem, ISG can tailor make a container to suite your project.

Our reputation is backed by our customers. References available from all the customers in pages 46, 47, 48 and 49 of this brochure.

Specifications

External Dimensions (mm)			Internal Dimensions (mm)			Weight (kg)		Capacity	
Length	Width	Height	Length	Width	Height	Max. Gross	Tare	Max. Payload	(M ³)
4012	2438	1850	N/A	N/A	N/A	19960	2360	17600	11.9

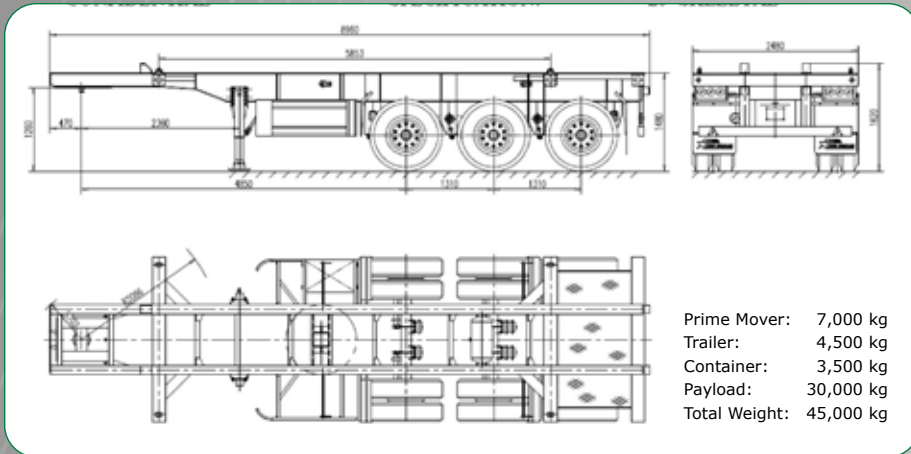


FREIGHT CAR AMERICAS - ABC Rail Wagons for Copper Concentrate

The above pictures are of the ABC rail car delivering bulk copper for Savage Transport from Colorado Springs to Elko Nevada. These wagons were designed for maximising bulk container traffic by allowing the containers to be double stacked over the bogies and single stacked over the two intermediate positions nearest the articulated truck.

The lightweight spine-type design offers maximum payload capacity and low maintenance at a competitive price while the articulation also allows for tighter turning radius. ISG is the agents for the ABC rail wagons combining a full logistic solution with either light weight truck trailers or light weight rail wagons using our patented containerised solution of tippers and containers.

Our reputation is backed by our customers. References available from all the customers in pages 46, 47, 48 and 49 of this brochure.



Introducing the ISG COMBO™ Truck Trailers and Bulk Containers

Please Note: Various countries have different road laws and axle weights apply. You would need to check your local road laws to make sure the above combination works for your location.

www.pittoship.com

ISG - Pit to Ship Solutions™



Rotating Container Fleet for Mineral Sands Container

- Purpose built for heavy duty mining applications.
- Suitable for products such as Iron Ore and Concentrates.
- Designed and extensively tested for use with a Tippler (180 degree rotation to discharge product).
- Supplied with waterproof removable hard lids which also eliminate dust during transit. These lids can be manufactured to suit any Tippler lid lifting system.
- Heavy duty, empty and loaded lift fork pockets
- Can be custom built to specific requirements, in a range of various heights.
- Can be supplied with or without hard lid.
- Stackable when loaded.
- Intermodal Solutions Group (ISG) manufactured 1,750 units for Cristal Mining. These units can be seen in operation at Flinders Ports in Adelaide.
- In 2024 ISG leased 1,850 mineral sands containers to Kimberley sands for their Thunderbird project in Broome.
- ***Our reputation is backed by our customers. References available from all the customers in pages 46, 47, 48 and 49 of this brochure.***

Specifications

External Dimensions (mm)			Internal Dimensions (mm)			Weight (kg)		Capacity	
Length	Width	Height	Length	Width	Height	Max. Gross	Tare	Max. Payload	(M³)
6058	2438	2000	N/A	N/A	N/A	38000	3550	34350	22.8

ISG - Pit to Ship Solutions™



Rotating Container Fleet for Nickel Concentrate

Pit to Ship Solutions has designed, tested and manufactured a high cubic capacity container suitable for use with a Tippler. The container suits products with a lower density such as Nickel Concentrate, which require a high cubic capacity. The container is fitted with a removable hard lid, which can be lifted automatically and can be modified to suit any tippler in the Australian market.

The unit is tested and certified to BK2, IMDG and ADG7 requirements for transporting dangerous cargo, on road, rail or sea. The container includes our special anti abrasion coating. Intermodal Solutions Group (ISG) manufactured 1000 containers for Queensland Nickel and Vale. These units can be seen in operation in Townsville QLD.

Our reputation is backed by our customers. References available from all the customers in pages 46, 47, 48 and 49 of this brochure.

Specifications - 20'x8'6" and 20'x9'6"

External Dimensions (mm)			Internal Dimensions (mm)			Weight (kg)			Capacity
Length	Width	Height	Length	Width	Height	Max. Gross	Tare	Max. Payload	(M ³)
6058	2438	2591	N/A	N/A	N/A	30480	3900	26580	28.8
6058	2438	2895	N/A	N/A	N/A	30480	4000	26480	32.6

ISG - Pit to Ship Solutions™



20' BK2 Half Height Container for the European market

In 2017 Eramat a company based in France went to tender for 150 special half height containers to be used in freezing conditions around Europe. ISG was successful in winning the tender and with the backing of CSL leased the containers to the customer.

Our reputation is backed by our customers. References available from all the customers in pages 46, 47, 48 and 49 of this brochure.

Specifications

External Dimensions (mm)			Internal Dimensions (mm)			Weight (kg)		Capacity
Length	Width	Height	Length	Width	Height	Max. Gross	Tare	Max. Payload (M ³)
6058	2438	1433	N/A	N/A	N/A	35000	3080	31920 15.4

ISG - Pit to Ship Solutions™



Pit to Shed Solution

Introducing another concept to our dust free logistics and loading solution. The Pit to Shed solution comes into play when there is current port infrastructure available. The customer still uses our dust free patented containers with sealed lids. The containers are loaded at the mine site by either front end loaders or by a conveyor belt system. The lids of the containers are taken off by the ISG mine site lid lifter and after the containers are loaded they are replaced onto the containers. The loaded containers are either railed or transported by road to the port.

At the port the containers are unloaded into the hopper system via a tippler using the ISG patented lid lifting system. The containers are then loaded empty back onto the train or truck and transported back to the mine site to start the cycle again.

The photos above and on the next page shows the system currently working in Peru and another port in Chile is copying the same concept using current port infrastructure. Green field, brown field or just needing a change for safety, environmental or productivity reasons ISG has the solution.

ISG - Pit to Ship Solutions™



Fertilizer Grade Containers

In 2017 ISG was successful with another tender this time for UREA containers . The special designed containers will carry urea from Bolivia to Brazil and using the patented ISG lid lifter will be unloaded in Brazil with RAM tippers.

Logistic task

Bolivia is a very remote country in South America and is land locked . This was a very challenging task to deliver 500 high cube specialised containers from China to Bolivia . The containers were shipped from China to Chile. In Chile two containers per truck were loaded and the trucks delivered the containers 800 kms into a Bolivian rural area where the urea processing plant was being made. Fertilisers are a very corrosive product and ISG applied special interior paint to assist in the protection of the containers. The containers are loaded through a chute arrangement and the lids were designed to suit the chute loading facility in this remote area of the world.



BFI Fertilizer Containers

In 2021 ISG responded to a tender in Brunei for the supply of 1,000 fertilizer tippler friendly containers. Using our past experience with YPFB in Bolivia and the loading knowledge using a shed chute system, ISG was awarded the tender to supply the containers.

Not only did ISG bring to the table a strong container design but our engineering team assisted BFI with the loading procedures and the unloading capability into the bulk ships hold. Further proof of the success was another order for 300 more containers in 2024.

The engineering team at ISG can assist you in your project from greenfield or Brownfield

ISG - Pit to Ship Solutions™



Rotating Container Fleet for Grain

Soya bean is being loaded at the port of Rosario in Argentina using the ISG pit to ship solution and the ISG tippler friendly grain containers . The port of Rosario is a brown field site that needs a massive amount of work and money spent on the port to transfer it into a modern facility. The loading of grain is one of the ports major revenue streams. Rather than spending millions of dollars to upgrade the loading process the port looked to ISG Pit To Ship solutions. The patented lid lifter allowed the ISG patented containers to be sealed after loading and become vermin proof until the product is loaded into the ship's hull using a tippler. The lid is removed inside the ship's hull making the process automated and no human interaction is needed making this a safe loading solution.

Our reputation is backed by our customers. References available from all the customers in pages 46, 47, 48 and 49 of this brochure.

Specifications

External Dimensions (mm)			Internal Dimensions (mm)			Weight (kg)		Capacity	
Length	Width	Height	Length	Width	Height	Max. Gross	Tare	Max. Payload	(M ³)
6058	2438	2896	5862	2266	2612	30480	3900	26580	34.2

ISG and OBORTECH

Multimodal monitoring system | Blockchain and IoT



Simple Solution for Digitized and Traceable Supply Chain

Obortech's solution is highly customizable with fast deployment, requiring only 1-2 weeks to set up. It is a multi-actor collaboration platform that can build a rich story of the product by different supply chain participants. Multiple actors build together a story of a product in an environment similar to a "News feed" in a social network. Smart IoT sensors monitor the container's sealing, temperature, humidity, and location and transmit the data to the platform. Each container shipment data is connected to a unique NFT on the blockchain to ensure tamper-proof data and a QR code that can be easily scanned by end-users to see the product journey.

Solutions on mineral and food product supply chains: www.obortech.io/use-cases

See the features and contact us here: www.obortech.io/solution

ISG - Pit to Ship Solutions™



Introducing the FLEXITOP

Welcome to the Flexitop range of bulk open top containers. Traditional open top containers take two experienced people over 40 minutes to replace the roof tarp. Our patent pending Flexitop container takes one untrained person three–four seconds to win back the handle and seal the roof. This amazing technology has revolutionised the bulk container industry.

Grain loaders and transport companies now have the flexibility of using either road , rail or sea to move their cargo from field to ship by using this technology. Companies like Smiths chips move their potatoes one way and their finished product the other way by using the pallet wide design.

Commodities like salt , sugar , grain , and sulphur are also being carted on road and rail using our Flexitop container. Depending on your product you can de-canter the load using the rear hatches that are fitted with grain locks for extra security.

The following pages will provide you with some interesting designs that we have expanded on with Flexitop technology.

ISG - Pit to Ship Solutions™



FLEXITOP – Multipurpose – Pallet Wide

- Manufactured to suit a range of bulk products and Palletised products.
- Load bulk product one way, palletised finished product on the return journey.
- Fitted with FLEXITOP retractable tarpaulin system.
- Smooth Internal Walls
- Large Tipping Hatch
- Rear Doors
- Pallet wide and capable of 10 pallets on the floor.
- Heavy lift fork pockets.
- Sampling ports can be included, to allow product sampling without opening the Flexitop Tarpaulin.
- Within ISO Dimensions for universal handling.
- Units shown in the photos were manufactured to carry potatoes and finished product for SMITHS crisps.



PATENT PENDING

Specifications

External Dimensions (mm)			Internal Dimensions (mm)			Weight (kg)			Capacity
Length	Width	Height	Length	Width	Height	Max. Gross	Tare	Max. Payload	(M ³)
6100	2500	2896	5875	2354	2311	31600	3600	28000	32

Stacking Test Load 60,960 kg

ISG - Pit to Ship Solutions™



FLEXITOP – Bulk Grain

- Manufactured to suit a range of bulk products such as Wheat and other grain crops.
- Load bulk and discharge bulk product easily and efficiently.
- Fitted with FLEXITOP retractable tarpaulin system.
- Smooth Internal Walls
- Large Tipping Hatch fitted with grain locks.

- Heavy lift fork pockets.
- Sampling ports can be included, to allow product sampling without opening the Flexitop Tarpaulin.
- Stackable empty and loaded.
- Tarp can be operated manually or with power.

Specifications

External Dimensions (mm)			Internal Dimensions (mm)			Weight (kg)			Capacity
Length	Width	Height	Length	Width	Height	Max. Gross	Tare	Max. Payload	(M ³)
6058	2500	2896	5829	2354	2431	31560	3560	28000	33.4



PATENT PENDING

ISG - Pit to Ship Solutions™



The unit shown in the photo was especially made for KIWI RAIL in New Zealand.



FLEXITOP – Bulk Coal

- Manufactured to suit a range of lower density products such as Coal, and to suit logistic systems that can only cope with lower payloads.
- Load bulk and discharge bulk product easily and efficiently.
- Fitted with FLEXITOP retractable tarpaulin system.
- Smooth Internal Walls
- Large Tipping Hatch fitted with grain locks.

- Heavy lift fork pockets.
- Sampling ports can be included, to allow product sampling without opening the Flexitop Tarpaulin.
- Stackable empty and loaded.
- Tarp can be operated manually or with power.
- ISO dimensions for universal handling.



PATENT PENDING

Specifications - 20x2438x2438 Open Top

External Dimensions (mm)			Internal Dimensions (mm)			Weight (kg)		Capacity	
Length	Width	Height	Length	Width	Height	Max. Gross	Tare	Max. Payload	(M ³)
6058	2438	2438	5829	2292	1855	23000	3000	20000	24.8

ISG - Pit to Ship Solutions™



FLEXITOP - Ore Container

- Manufactured to suit a range of higher density products such as Ore and Gravel.
- Smooth Internal Walls
- Large Tipping Hatch fitted with grain locks
- Heavy lift fork pockets.
- Sampling ports, **can be added**, to allow product sampling without opening the Flexitop Tarpaulin.
- Stackable empty and loaded.
- Tarp can be operated manually or with power.
- ISO Dimensions for universal handling.

Specifications - 20x2438x2438 Open Top (Heavy Duty)

External Dimensions (mm)			Internal Dimensions (mm)			Weight (kg)		Capacity	
Length	Width	Height	Length	Width	Height	Max. Gross	Tare	Max. Payload	(M³)
6058	2438	2438	5829	2292	1855	30480	3250	27230	24.8



PATENT PENDING



20' Bulk Open Top Containers for End Tipping

ISG has designed a range of open top containers with rear tipping hatches. ISG also has a fleet of hard top bulk containers with three round roof hatches for loading commodities into. These containers can also be de-cantered using the rear tipping hatches.

ISG also has heavy duty scrap containers, side door open top containers, Paper friendly bulk containers, coal containers, sugar containers with funnel chutes to name a few. Our engineering team can redesign any of our containers to suit your requirements.

ISG believe in continuous improvement that is why we have such a large range of specialised bulk containers.

The ISG fleet is considered to be the largest fleet of specialised designed bulk containers in the world . So whether your moving minerals or grain our fleet can adapt to your task.

ISG - Pit to Ship Solutions™



20' Bulk Open Top Containers for End Tipping

Pit to Ship Solutions specialised 20' Open Top Containers for Bulk applications are purpose build for the harsh conditions in Australia.

Features include:

- 1200mm High rear tipping hatch
- Hatch locking mechanism is operated from the side of the container
- Hatches fitted with "Grain Locks" for maximum safety on road and rail.
- 5mm thick Steel floor plate
- Deflectors fitted to top rails of container
- Fork pockets for loaded lifting
- Can be fitted with Tarpaulin
- Heavy duty construction for harsh products like Coal.

Specifications

External Dimensions (mm)			Internal Dimensions (mm)			Weight (kg)			Capacity
Length	Width	Height	Length	Width	Height	Max. Gross	Tare	Max. Payload	(M³)
6058	2438	2591	5820	2276	2786	31185	3130	28055	32.1

Stacking Test Load 27,430 kg

ISG - Pit to Ship Solutions™



20' x 2500 x 9'6"
Pallet Wide Dry Bulk
Container (Front
Hatches).

Features three
hatches in front wall
Fits 10 Australian
CHEP pallets on the
floor.



20' x 2438 x 9'6" ISO
Dry Bulk Container
(Letter Box Hatch).

Features letter
box hatch in front
wall and rear door
hatches.



Standard Bulk Containers

Pit to Ship Solutions manufactures high quality heavy duty Dry Bulk Containers. Dry Bulk Containers can be supplied with various features. Some of these features are: Letter Box Hatches, Door Hatches, Roof Hatches with internal release mechanism, Smooth Walls, Fixings and tie downs for liner bags, Pallet Wide for Australian CHEP pallets.

Specifications - 20'x2438x9'6" Bulk and 20x2500x9'6" Bulk

External Dimensions (mm)			Internal Dimensions (mm)			Weight (kg)			Capacity
Length	Width	Height	Length	Width	Height	Max. Gross	Tare	Max. Payload	(M ³)
6058	2438	2895	5847	2324	2704	30480	3080	27400	36.7
6058	2500	2896	N/A	2395	2704	30480	3300	27180	38.1

ISG - Pit to Ship Solutions™



Bulk - Smooth Wall and Paper Friendly

Pit to Ship Solutions manufactures high quality smooth wall bulk containers for transporting a wide range of bulk products and general purpose cargo. Smooth wall designs are excellent for food grade products and paper products. High quality paint systems used on these containers ensures long life in harsh conditions. We can offer complete solutions including the design and manufacture of accessories such as hoppers and liner bag systems.

Please contact Pit to Ship Solutions to develop custom bulk containers to suit your particular application.

Specifications - 20x2500x9'6" Bulk (Smooth Wall)

External Dimensions (mm)			Internal Dimensions (mm)			Weight (kg)		Capacity
Length	Width	Height	Length	Width	Height	Max. Gross	Tare	Max. Payload (M ³)
6058	2500	2895	5893	2400	2665	35000	3190	31810

ISG - Pit to Ship Solutions™



Coke and Anode Bulk Containers

ISG engineering team worked with ARG a Division of QR National to develop a unique container. The Coke and Anode container is designed to transport coke and coal one way, and then Copper anodes on the return leg. These containers are in service for XTRATA mines and refineries in far north Queensland.

Features are:

- Smooth Internal Walls, 3mm Thick
- Steel Floor – 5mm Thick
- Large Tipping Hatch fitted with grain locks.
- Heavy duty racks for carrying packs of Copper anodes
- Side access doors for loading of Anode Racks.
- Heavy lift fork pockets.
- Stackable empty and loaded.
- ISO dimensions for universal handling.

Specifications - Coke & Anode Bulk Container

External Dimensions (mm)			Internal Dimensions (mm)			Weight (kg)		Capacity
Length	Width	Height	Length	Width	Height	Max. Gross	Tare	Max. Payload (M ³)
6058	2438	2896	5829	2247	2577	33290	4390	28900

ISG - Pit to Ship Solutions™



20' Scrap Steel and Waste Containers

ISG specialised 20' Open Top Containers for Scrap steel and Waste are purpose build for the harsh loading and unloading conditions related to these types of products.

Features include:

- Single "Barn Style" Rear Door.
- Door locking mechanism is operated from the side of the container.
- Door locking mechanism is robust, simple to use and easy to maintain.
- Locking mechanism designed for operator safety when unloading the container
- 5mm thick Steel Floor Plate and Side Walls for maximum impact and wear resistance
- Smooth internal walls and door opening to ensure product cannot "Snag" when discharging.
- Heavy Duty Construction
- Suitable for Transport on Road, Rail and Sea

Specifications

External Dimensions (mm)			Internal Dimensions (mm)			Weight (kg)		Capacity	
Length	Width	Height	Length	Width	Height	Max. Gross	Tare	Max. Payload	(M ³)
6058	2438	2591	5848	2110	2409	30480	4450	26030	39.7

Stacking Test Load 88,430 kg

ISG - Pit to Ship Solutions™



Safe and Secure Waste Container Solutions

ISG understands the critical importance of safe and compliant transportation of waste materials. Our heavy-duty waste containers are designed to meet stringent international regulations for handling scrap metal, removal of contaminated chemical plants waste, biological waste, and other hazardous materials. These fully intermodal containers are tested and certified for road, rail, and sea transport.

The containers used to transport waste in the Roche Clarecastle Site Remediation project have been supplied by ISG. Check out the details at www.rocheclarecastle.ie

Ensure the responsible and secure movement of your waste cargo with ISG's specialized container solutions. Our team of experts will work closely with you to customize the containers to meet your specific requirements and ensure compliance with all relevant safety standards. Reach out to us today for a tailored waste container solution.

Specifications

External Dimensions (mm)			Internal Dimensions (mm)			Weight (kg)			Capacity
Length	Width	Height	Length	Width	Height	Max. Gross	Tare	Max. Payload	(M³)
N/A	N/A	N/A	N/A	N/A	N/A	32000	4000	28000	27.4

ISG - Pit to Ship Solutions™



Safe and Secure Waste Container Solutions

In 2024 ISG designed and supplied waste containers to Canada for road and rail usage. Waste products vary and the engineering team at ISG can design our waste containers to suit your product that needs to be moved by either rail or road.

ISG can arrange for the certification of the containers in various countries around the world. Australia, Canada, America, Ireland and Europe have some of the most stringent regulations on the globe and ISG has had our designs certified to be used in these countries.

Our engineering team is available to discuss your logistic requirements on www.pittoship.com

Specifications

External Dimensions (mm)			Internal Dimensions (mm)			Weight (kg)			Capacity
Length	Width	Height	Length	Width	Height	Max. Gross	Tare	Max. Payload	(M³)
N/A	N/A	N/A	N/A	N/A	N/A	30530	4700	25830	24.5

ISG - Pit to Ship Solutions™



Safe and Secure Waste Container Solutions

In 2022, 2023 and 2024 ISG supplied waste containers for the USA market. The ISG engineering team can tailor make your waste container for any project. ISG engineering team designed these containers for the USA marketplace to be moved on both rail and road. The containers are certified to be double stacked on the ABC rail wagons in America. Various waste products are transported using the ISG designed containers.

Our engineering team is available to assist you with your container designs for your next waste project.

Specifications

External Dimensions (mm)			Internal Dimensions (mm)			Weight (kg)			Capacity
Length	Width	Height	Length	Width	Height	Max. Gross	Tare	Max. Payload	(M³)
N/A	N/A	N/A	N/A	N/A	N/A	30480	4320	26160	19.3

The Intermodal Solutions Group (ISG)

Remediation, Waste and Scrap Containers



Scrap Metal Container

ISG have designed many scrap containers suitable for various waste and scrap products.

This container was built for the Australian domestic market for moving scrap metal via rail from Brisbane to regional NSW

The container is heavy duty and suitable for top loading and rear door discharge.

Specifications

Weight (kg)			Capacity
Max. Gross	Tare	Max. Payload	(M ³)
30480	4200	26280	37.5





DCN Environmental and Safety Award

ISG winners of the Daily Commercial News (DCN) environment award.

This award is given for initiatives or implementation of operating systems or company policies which contribute to an improved environment or improved safety in the movement of freight. This award is also open to entries demonstrating implementation of systems which improve OH&S practices.

ISG was honoured by receiving an award for environment and safety for the implementation of our dust free logistic and loading system in ports around the world.

The award was presented to Matthew Chalmers General Manager of ISG Pit To Ship Solutions.



ALABC Business Excellence Award



ISG was awarded the Australian Latin America Business Council (ALABC) business excellence award for a second time in 2025. The implementation of the Containerised Bulk Handling system (CBH) to the Americas and the world's first automated port with bulk loading for copper concentrates were milestones. A sell-out crowd including Peru, Chile and Argentina's ambassadors were in the audience to watch the award being handed out. Managing Director Garry Pinder stated on the night "ISG is very humbled to receive this award for a second time and to be acknowledged as the implementors of the CBH system into the Americas is very rewarding".

Applicants were assessed for their performance against 4 key criteria:

1. Strategy clearly defined for entry/engagement/growth in the Latin American region.
2. Growth in the Latin American region (e.g. indicated by increased revenue, operational activity or markets served.)
3. Innovation underpinning business success (e.g. innovative products, services, processes or business models)
4. Commitment to maintain and grow presence and activity in the Latin American region.

The award was presented to Garry Pinder at a packed ball room at the Melbourne Sheraton hotel on the 24th of July 2025.



ALABC Business Excellence Award

ISG winners at the Australian Latin America Business Councils (ALABC) Business excellence award. The award was presented by the Australian foreign affairs minister, The honourable Julie Bishop. The award focuses on successful Australian companies who have excelled in trading with Latin American countries. ISG now covers the West coast of the Americas with their patented dust free logistic and loading solution in most of the major ports.

Applicants were assessed for their performance against 4 key criteria:

1. Strategy clearly defined for entry/engagement/growth in the Latin American region.
2. Growth in the Latin American region (e.g. indicated by increased revenue, operational activity or markets served.)
3. Innovation underpinning business success (e.g. innovative products, services, processes or business models)
4. Commitment to maintain and grow presence and activity in the Latin American region.

The award was presented to the CFO Julie Boden at a packed ballroom in Sydney.



Winners of the 2015 NSW Environment Export Awards

The Export Council of Australia would like to congratulate the finalists announced for the 2015 Premier of NSW's Export Awards. With a wide range of exporters competing from across the state the 85 finalists announced today by the Export Council of Australia (ECA) were selected from the largest pool of applicants in the 53-year history of the awards.

Chief Executive Officer for the Export Council of Australia said "the competition is extremely tough and we wanted to make sure all finalists were recognized for their tremendous efforts."

The above picture of the ISG team celebrating their award winning night, (L-R) General Manager Matthew Chalmers, Director Christopher Edwards, Managing Director Garry Pinder, Marketing Manager Cathie Pinder and Chief Financial Officer Julie Boden.



Sponsorship - Don Orione in Antofagasta, Chile

The ISG team identified a special needs facility in the heart of Antofagasta Chile that needed assistance. Antofagasta is one of the largest areas ISG has been successful in, with their patented logistic and ship loading system. ISG equipment is currently in six ports in the region and supplying to many blue chip mining companies. "Our company appreciates the support that has been given to our team in this region, and we are happy to give some back" commented Garry Pinder Managing Director of ISG. The facility has several needs and has no support other than that of the local people. The facilities roof has several large holes. When it rains the roof leaks which initiates movement of the residents, some bedbound. Often this may occur in the middle of the night.

The ISG team have arranged to completely replace the roof and the roof trusses to alleviate this problem. The roof span is over 300m² and is a large project that will take over four weeks to complete. ISG also noted an extra nurse was needed to assist with the residents. ISG has now sponsored two nurses on a one year contract for the facility.

ISG needed some legal assistance on this project and the team at Harris Gomez Chile donated their valuable time and we thank them for their generosity. Harris Gomez Chile office details are; Telephone: **+56 2 2242 1157** | Address: Av.Vitacura 5250, Office 802, Vitacura, Santiago, Chile | Email: hmg@hgomezgroup.com | www.hgomezgroup.com



Sponsorship - Zarik School, Tanzania, Africa

The team from Pit to Ship Solutions constructed a classroom for the Zarik School in the fishing village of Magumwanza in Tanzania, Africa.

The Pit to Ship Solutions team has been working in Africa for two years now and decided it was a good idea to build the classroom to assist the children with a good education. The village only had one other classroom and 40 children would go to school from 7am until 12pm. In the afternoon another 40 children would attend the afternoon session from 1pm until 5pm. The room was so overcrowded and only had one teacher for both sessions.

The team have also sponsored a school teacher for two years in the newly constructed Kookaburra classroom. The ISG logo has the iconic Australian bird the Kookaburra as its logo and the team thought it only fitting to have the classroom named after their logo. Now they have two teachers and two classrooms and the children have an eight hour school day (not sure if they are happy about that)!!!

Ports, Mining & Fertilizer Companies using our Rotating Container Fleet



Video: <https://vimeo.com/827272900/e848570a02?share=copy>



SOLURAIL

Val-d'Or QC, Canada

SOLURAIL



Spodumene (Lithium)

Reachstacker x1

Pit to Rail Gondola

PIEDMONT
LITHIUM

SAYONA



CBH MINING CLIENTS IN THE AMERICAS



GLENCORE



TRAFIGURA

BHP



SUMITOMO METAL MINING



newgold™

SAYONA

PIEDMONT
LITHIUM



Newmont™

BARRICK

TERMINAL OPERATOR CLIENTS IN THE AMERICAS



TERMINAL OPERATOR CLIENTS IN THE AMERICAS



ISG Pit to Ship Solutions™

ISG, helping you on your way to your Environmental, Social and Corporate Governance journey (**ESG**).



ISG Pit to Ship Solutions™ **CAPEX** or **OPEX** Logistic, Storage and Ship Loading System



Fertilizer Grade Container

Introduction: Intermodal Solutions Group (ISG) supply a logistical, storage and ship loading system to the fertiliser bulk industry.

ISG is Benchmarking their successful minerals system which has been implemented around the world using bulk containers and their patented lid lifting system on the tippler, to the fertilizer industry.

The system: The bulk containers are loaded at the production facility either by loading chutes or conveyor belts into the container roof hatches.

Once loaded the containers are sealed and the lid is not removed again until the bulk product is ready to be emptied.

The containers are transported by road or rail to the loading port. **Container ports** are employed for international export. **River ports** are utilised for river distribution



Tippler Loading

Storage: The containers are used as storage sheds eliminating the usage of conventional dust and labour-intensive sheds. **No double handling.**

At the river ports some customers have bagging facilities so the bulk product is unloaded using the container tippler into the bagging shed through a chute arrangement which then delivers the product into bags for river distribution.

At the ocean ports some customers use the current port facilities with the addition of the container tippler. When the ship arrives, the containers are moved around to the quay side and lifted into the ships hold. The lid is automatically lifted off the container and then the tippler rotates the container 360degrees emptying the fertilizer into the ships hold.

The lid is then replaced and the containers are taken back to the processing plant to start the loop again.

Green and Clean ISG , helping you on your way to your Environmental , Social and Corporate Governance journey (ESG)



Pit to Ship Solutions™

Suite 210/33 Lexington Drive
Bella Vista NSW 2153 AUSTRALIA

Phone: +61 400 035 548
www.pittoship.com



See videos on our website of ships
being loaded at: www.pittoship.com

See videos on our website of ships
being loaded at: www.pittoship.com